

ACUSON Origin Ultrasound System

Redefining diagnostic echo procedures

Experience the future
of cardiac ultrasound

Smart | Clear | Easy

siemens-healthineers.com/ultrasound



SIEMENS
Healthineers 

Redefining diagnostic echo procedures

Experience the future of cardiac ultrasound

Smart | Clear | Easy

Smart solutions redefined



Step into the realm of AI-powered diagnostics with the ACUSON Origin by Siemens Healthineers. Backed by one of the largest databases globally, our AI integration promises groundbreaking advancements in diagnostic capabilities:

- Unparalleled AI innovations with over 10 years and 900 AI-related patent families
- Harness the power of 5600+ AI-powered measurements, including AI Assist and AI Measure¹
- **AI Assist** – Real-time AI View Recognition for streamlined imaging and semi-automated Doppler placement
- Achieve 99% accuracy in view classification and Doppler placement for 23 anatomical targets²
- **2D Heart^{AI}** – Swift and Precise detection, with remarkable accuracy rates for diverse cardiac assessments
- 98%³ correlation for the mean GLS for each supported cardiac view (A4C, A3C, A2C, with and without contrast agent)
- Dive into **4D Heart^{AI}** for instant insights and real-time results, allowing comprehensive analysis and editing capabilities
- Attain 96% accuracy in detecting LV ED and ES volumes through 4D Heart^{AI}⁴, ensuring precise clinical data acquisition
- Enhanced Stress Echo capabilities include seven pre-configured exam protocols, adaptable for customization with up to 20 stages. This includes Wall Motion Scoring and Stress Echo Report functionalities, coupled with the option to initiate 2D Heart^{AI} for comprehensive chamber assessments.

¹ Data on file

² Overall accuracy 1732/1745 → 99.26% Accuracy (pg. 3)

³ Average for all views

⁴ Algorithm Study Report Unified Heart pg. 23 & 24



Clear imaging redefined

Elevate your clinical data acquisition with unmatched image clarity:

- **InFocus** uses synthesized, retrospectively focused transmit beams throughout the field of view that focuses at all depths eliminating reliance on traditional focal zones, ensuring consistently sharp images across depth ranges
- **AutoFlash Artifact Suppression Technology** reduces color flash artifacts due to motion without user interaction for improved color sensitivity and performance, even when a patient is actively breathing
- **UltraArt** real-time quad-display allows users to select their image preference with one touch from a real-time touch screen display. UltraArt reduces speckle and enhances contrast to provide a realistic tissue presentation and patient-specific processing that adapts to differences in tissue.

Easy workflow redefined

Simplify your workflow with the ACUSON Origin's user-centric design, offering:

- Intuitive touch screen and controls positioned for effortless access
- Ergonomically designed console reducing repetitive motion, ensuring ease of use
- Customizable workflows to optimize efficiency for doctors, sonographers, and patients
- Lighter¹, smaller¹, and easily maneuverable, making the system highly adaptable

¹ Compared to ACUSON SC2000

Unlock the potential of ACUSON Origin

Embrace the Smart, Clear, and Easy advantages of the ACUSON Origin by Siemens Healthineers. Transform your diagnostic echo procedures with cutting-edge AI, superior image clarity, and intuitive usability. Join the revolution in cardiac ultrasound and witness a new era in diagnostic excellence.

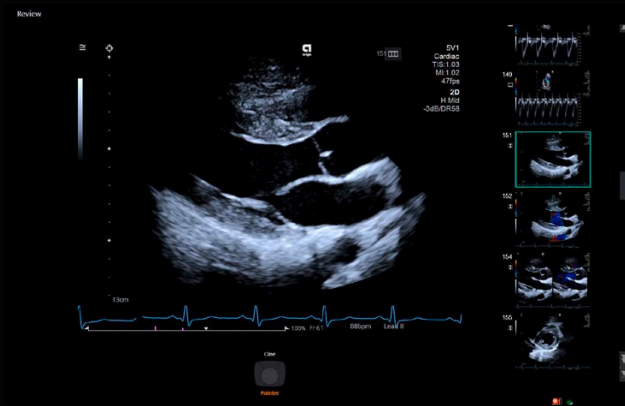
Contact us today to learn more about how ACUSON Origin can redefine your cardiac diagnostic capabilities.



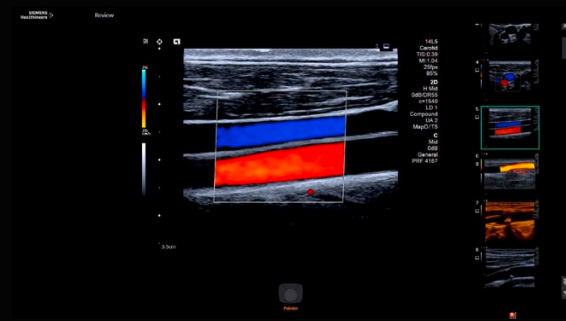
Spotlight: Transthoracic echocardiogram

Siemens Healthineers has the second most patents in AI in the world, second only to Google.

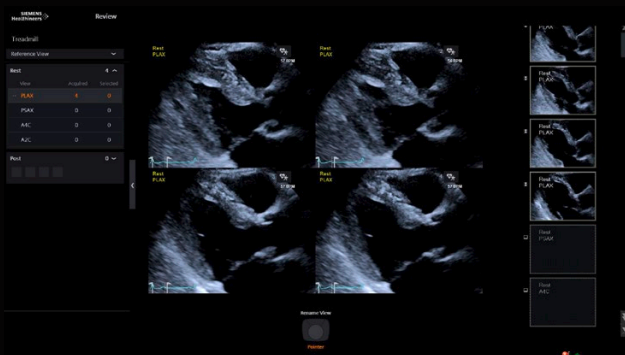




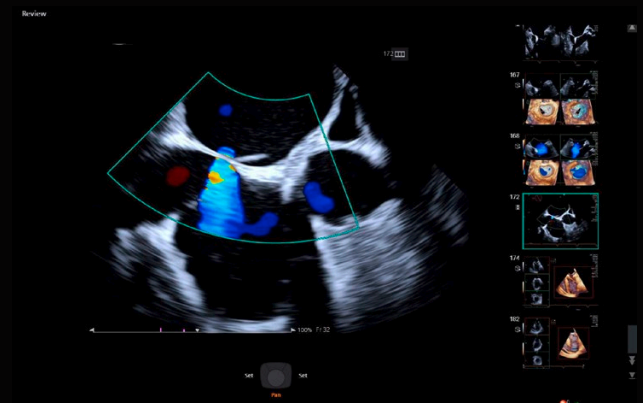
Utilizing single Crystal transducer technology to its fullest potential, the system ensures consistently sharp images throughout varying depth ranges via its optimized InFocus imaging capability.



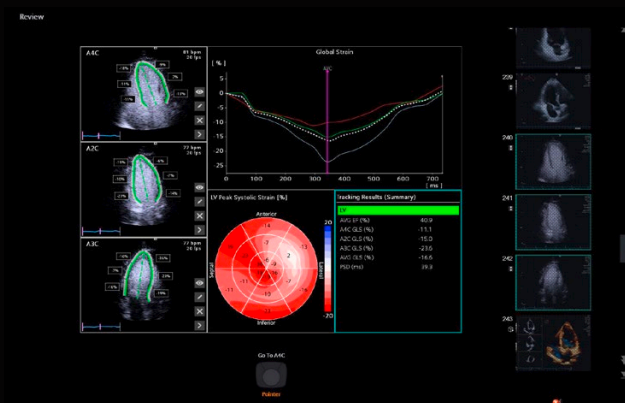
Experience superior vascular imaging with unparalleled clarity using InFocus imaging technology, coupled with Auto Color Doppler for precise placement and angle correction in pulsed wave Doppler, and Auto IMT Measurement for accurate assessments.



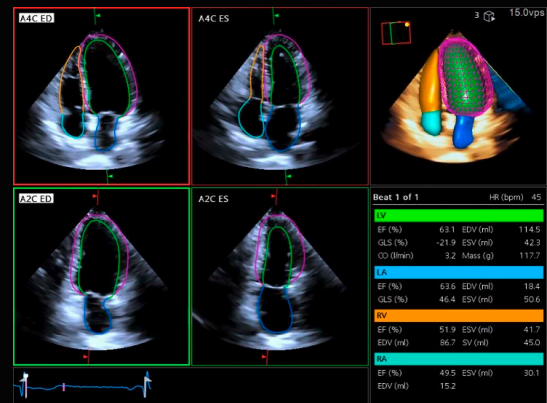
Customizable Stress Echo protocols – Wall Motion Scoring, staged measurements, and more.



4D and 2D TEE offering comprehensive visualization, aiding in precise assessments of cardiac structures and functions from multiple angles, enhancing diagnostic accuracy and treatment planning.



2D Heart^{AI} revolutionizes cardiac ultrasound by offering automatic multiple beat analysis, eliminating the need for an ECG and allowing seamless functionality with or without contrast for enhanced diagnostic efficiency.



4D Heart^{AI} streamlines diagnostics through automatic multiple beat analysis, obviating the necessity for an ECG significantly boosting diagnostic efficiency.

The information in this document contains general technical descriptions of specifications and options as well as standard and optional features, which do not always have to be present in individual cases.

Siemens Healthineers reserves the right to modify the design, packaging, specifications, and options described herein without prior notice. For the most current information, please contact your local sales representative from Siemens Healthineers.

Note: Any technical data contained in this document may vary within defined tolerances. Original images always lose a certain amount of detail when reproduced.

The products/features mentioned in this document may not be commercially available in all countries. Due to regulatory reasons their future availability cannot be guaranteed. Please contact your local Siemens Healthineers organization for further details. Standalone clinical images may have been cropped to better visualize pathology.

ACUSON Origin is a trademark of Siemens Medical Solutions, USA, Inc.

At Siemens Healthineers, we pioneer breakthroughs in healthcare. For everyone. Everywhere. Sustainably. As a leader in medical technology, we want to advance a world in which breakthroughs in healthcare create new possibilities with a minimal impact on our planet. By consistently bringing innovations to the market, we enable healthcare professionals to innovate personalized care, achieve operational excellence, and transform the system of care.

Our portfolio, spanning in vitro and in vivo diagnostics to image-guided therapy and cancer care, is crucial for clinical decision-making and treatment pathways. With the unique combination of our strengths in patient twinning¹, precision therapy, as well as digital, data, and artificial intelligence (AI), we are well positioned to take on the greatest challenges in healthcare. We will continue to build on these strengths to help overcome the world's most threatening diseases, enable efficient operations, and expand access to care.

We are a team of more than 71,000 Healthineers in over 70 countries passionately pushing the boundaries of what is possible in healthcare to help improve the lives of people around the world.

¹ Personalization of diagnosis, therapy selection and monitoring, after care and managing health.

Siemens Healthineers Headquarters

Siemens Healthineers AG
Siemensstr. 3
91301 Forchheim, Germany
Phone: +49 9191 18-0
siemens-healthineers.com

Manufacturer

Siemens Medical Solutions USA, Inc.
Ultrasound
22010 S.E. 51st Street
Issaquah, WA 98029, USA
Phone: 1-888-826-9702
siemens-healthineers.com/ultrasound